

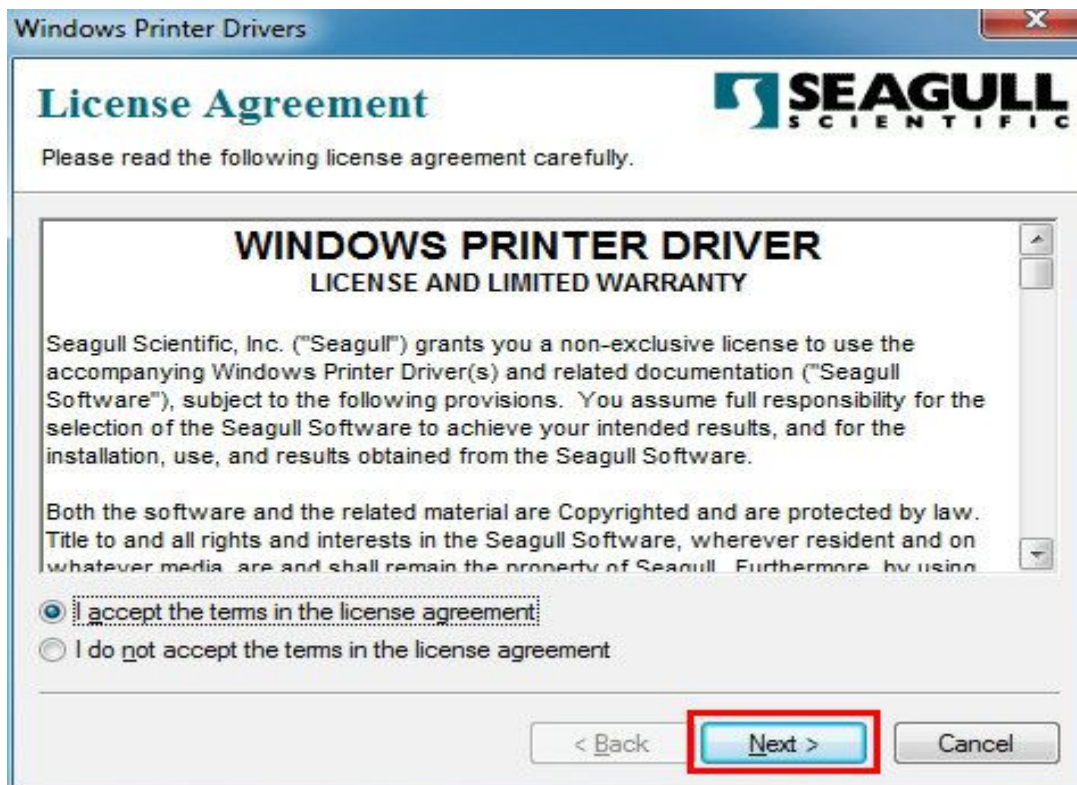
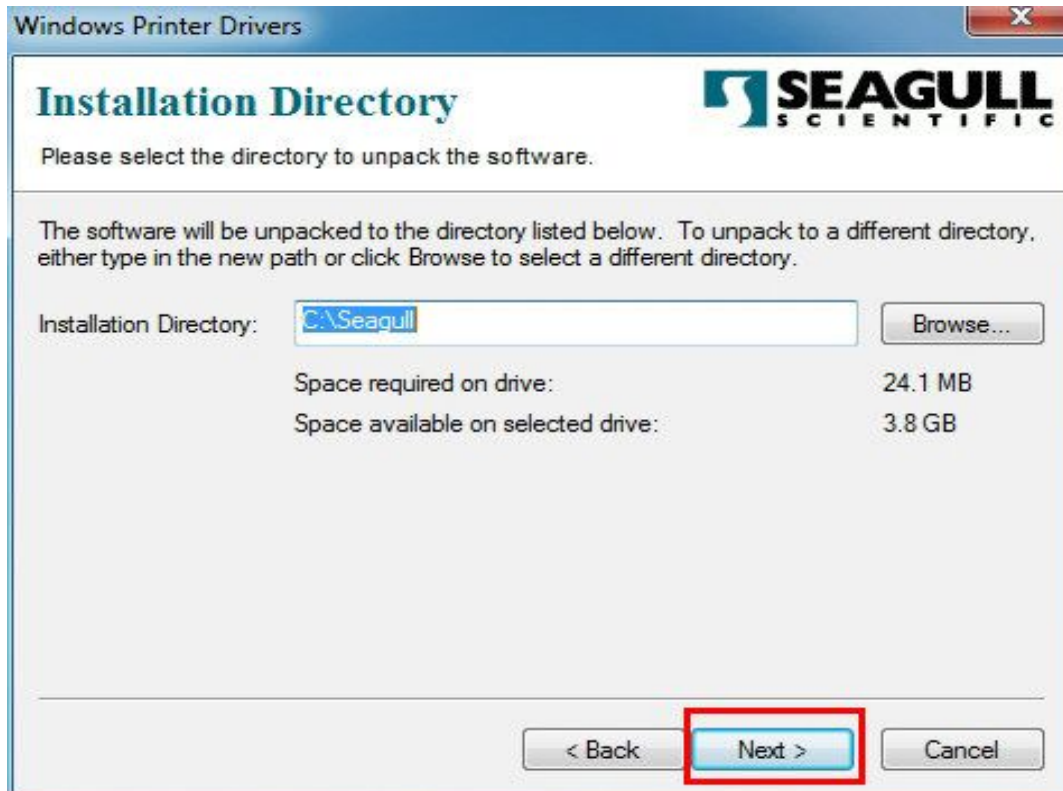


Process of installing bar code driver

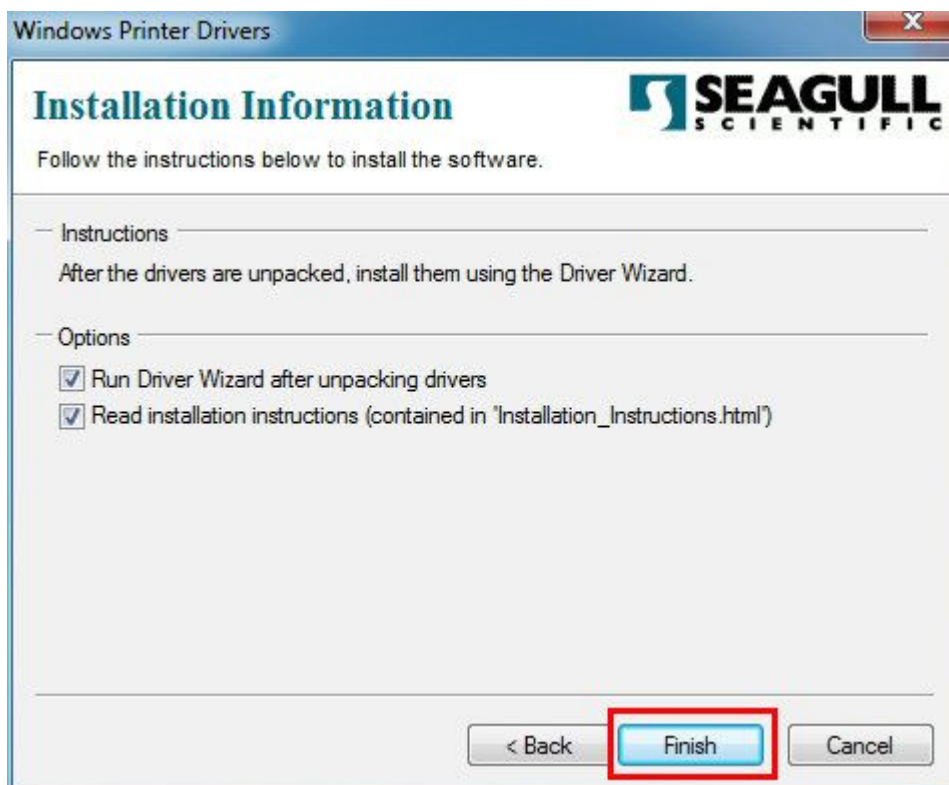
1. Find the mark:  , double click, choose “I accept the terms in the license agreement”, click “Next”, as below picture:



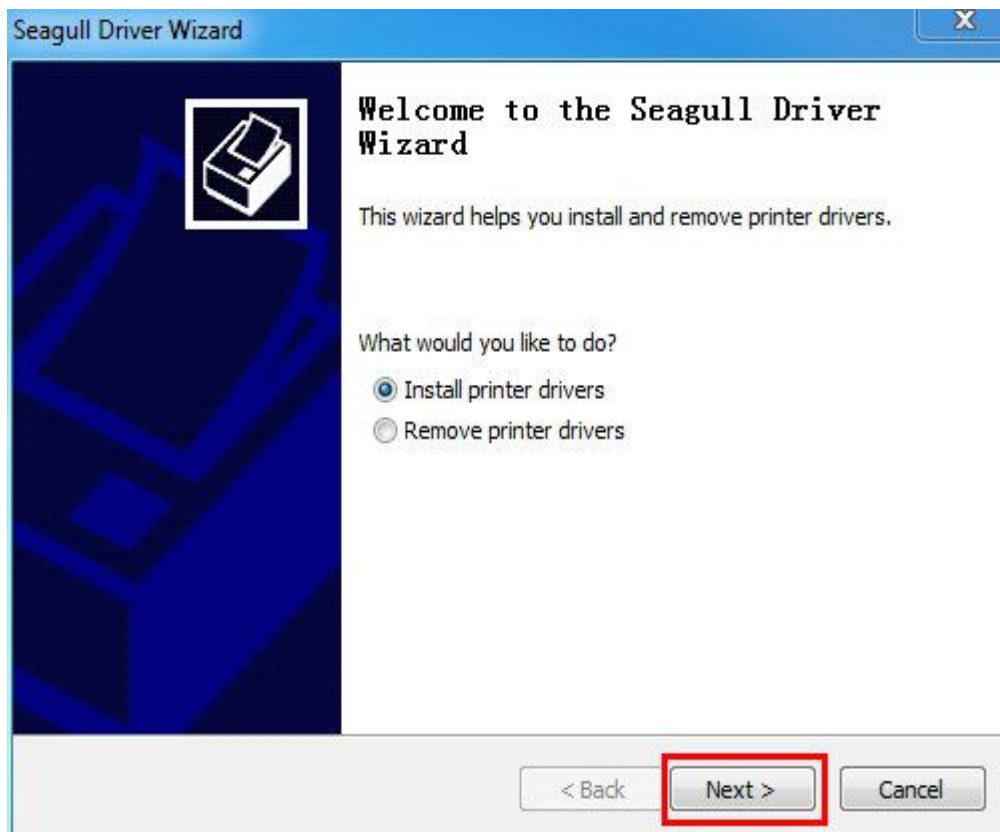
“Installation Directory” interface



2. choose "Run Driver Wizard after unpacking drivers", click "Next", as below picture:

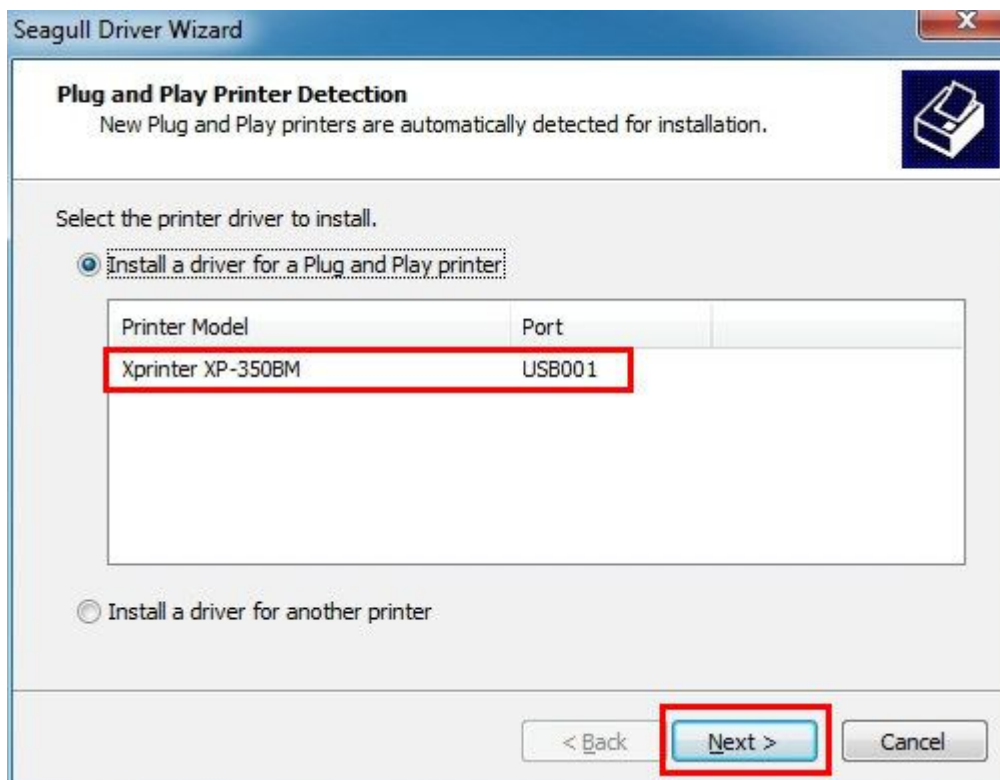
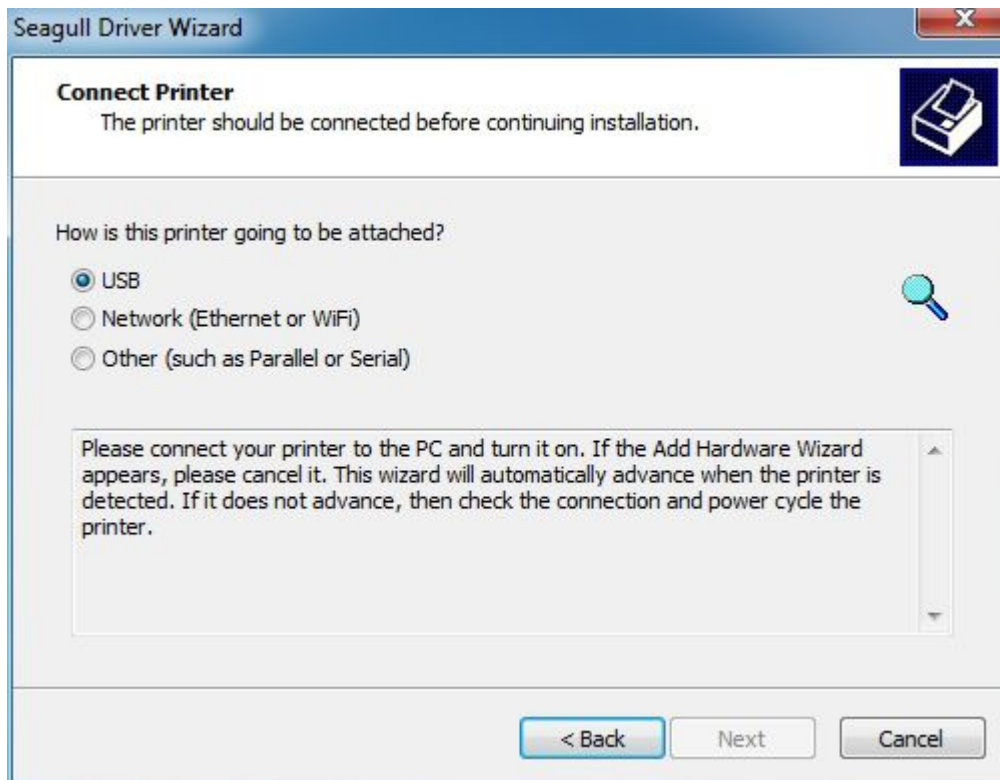


3. choose "Install printer drivers", click "Next", as below picture:

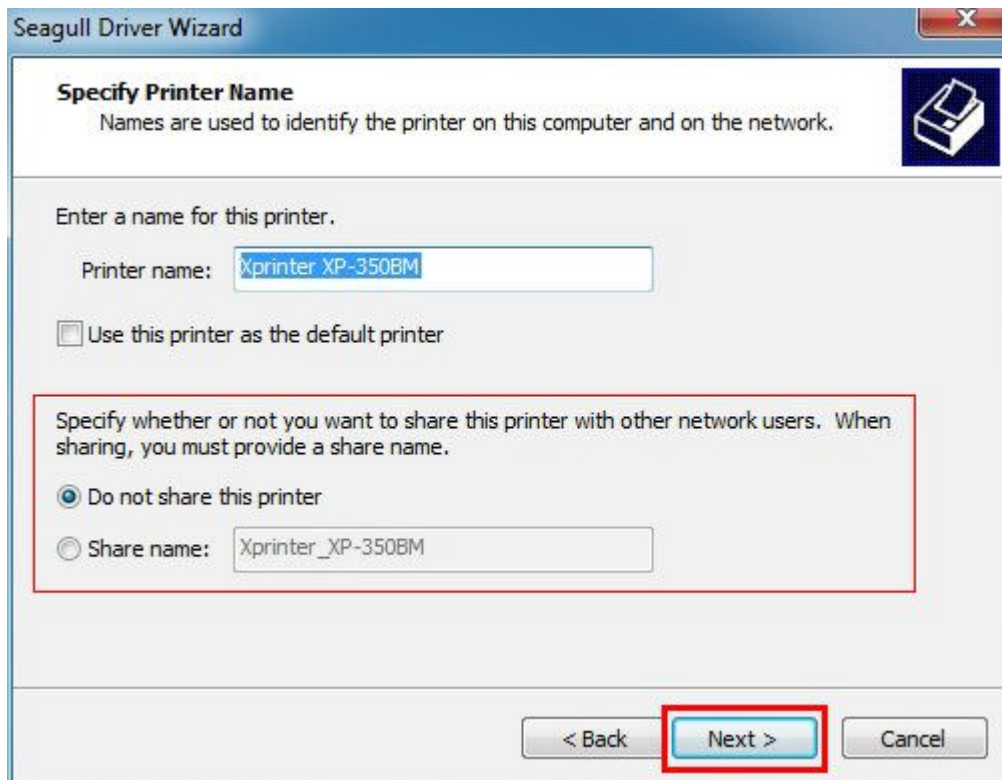


4. After installing the printer drivers, the printer automatically detects the communication port "USB001" which is currently in use. As shown in the following image, click "Next":

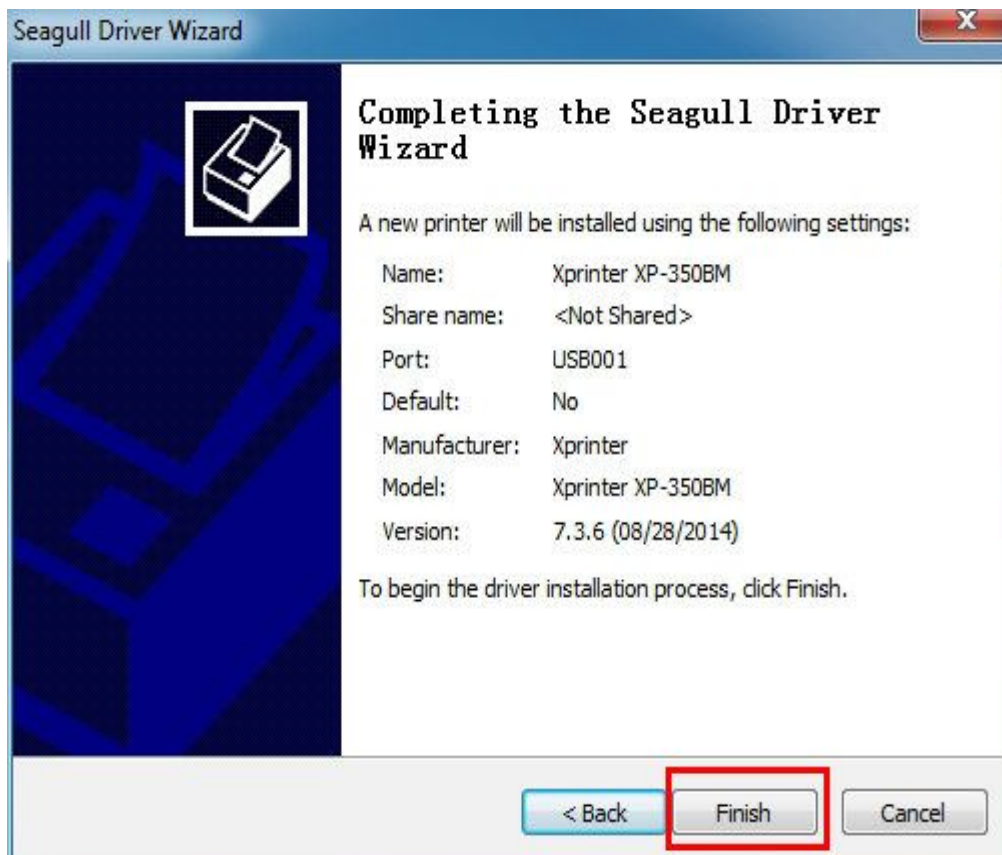
PS: No need to set port in drivers when printer detected the communication port which is currently in use.

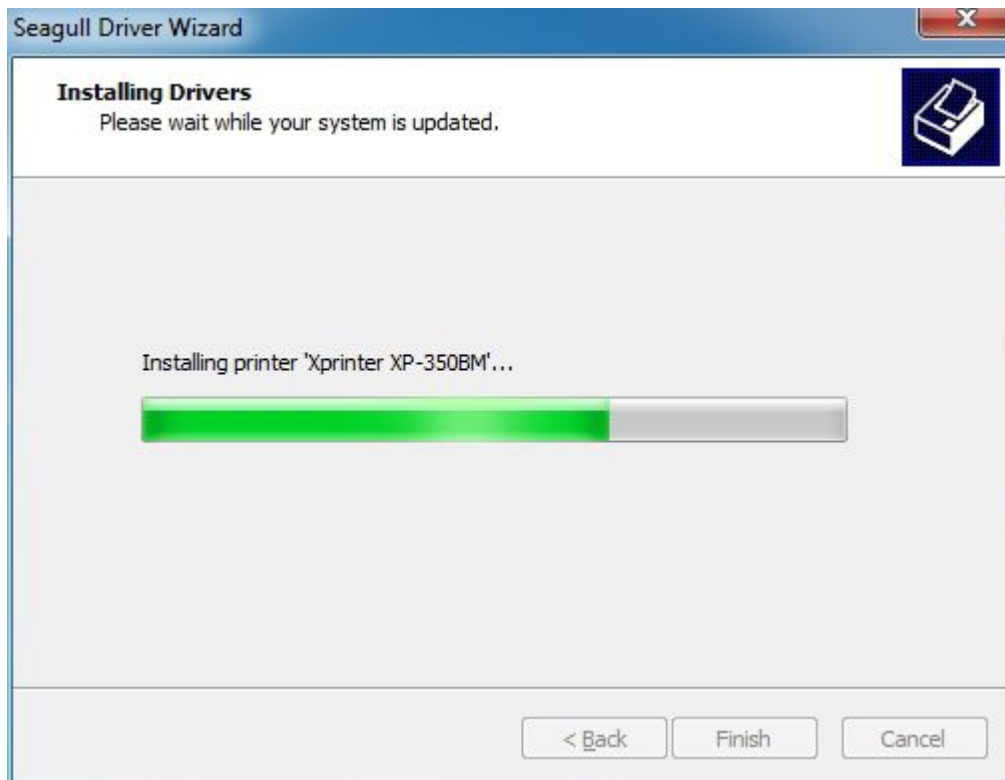


5. Default name of printer is “ Xprinter XP-350BM”, click “Next”, as below picture:

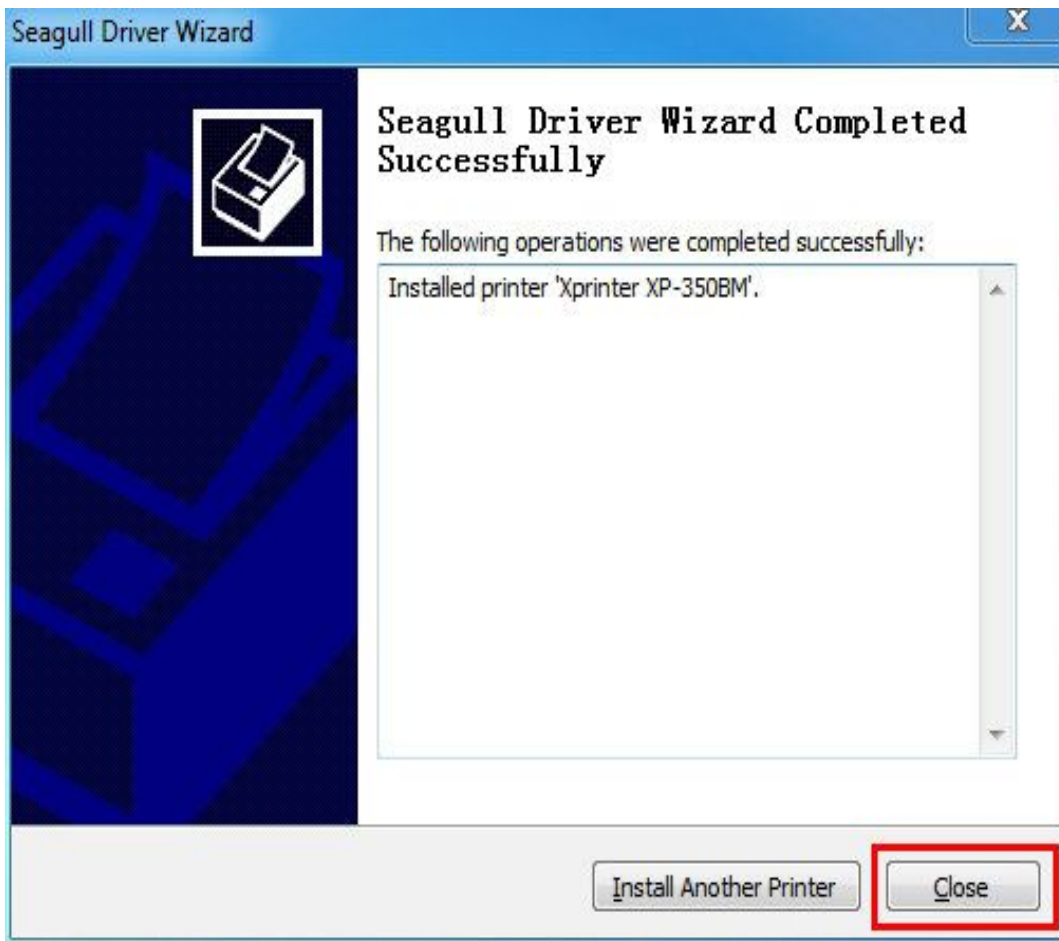


6. Completing driver installation, click “Finish”.

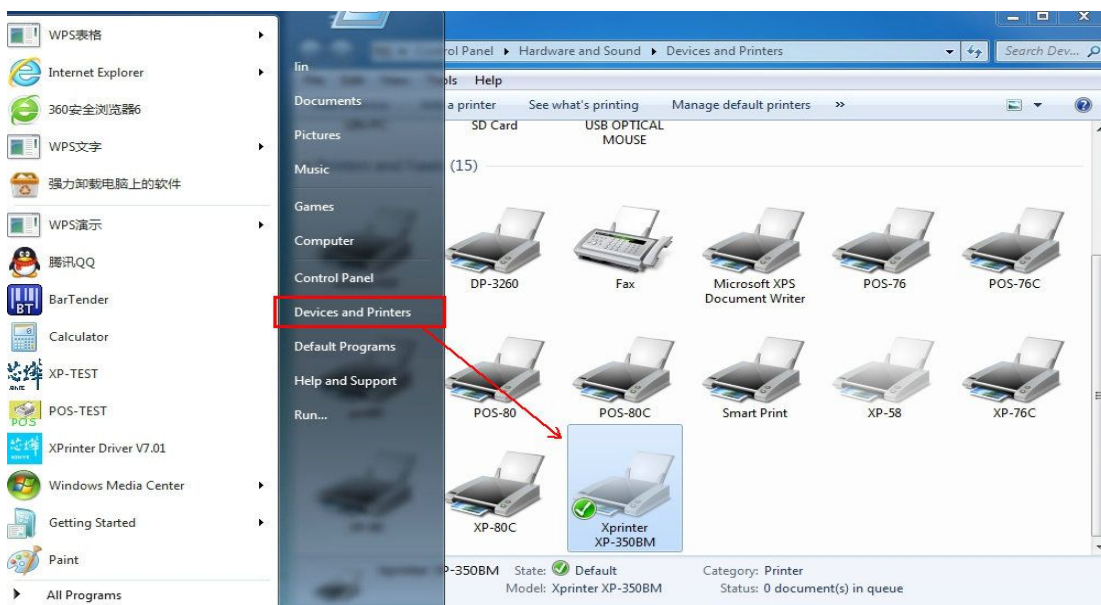


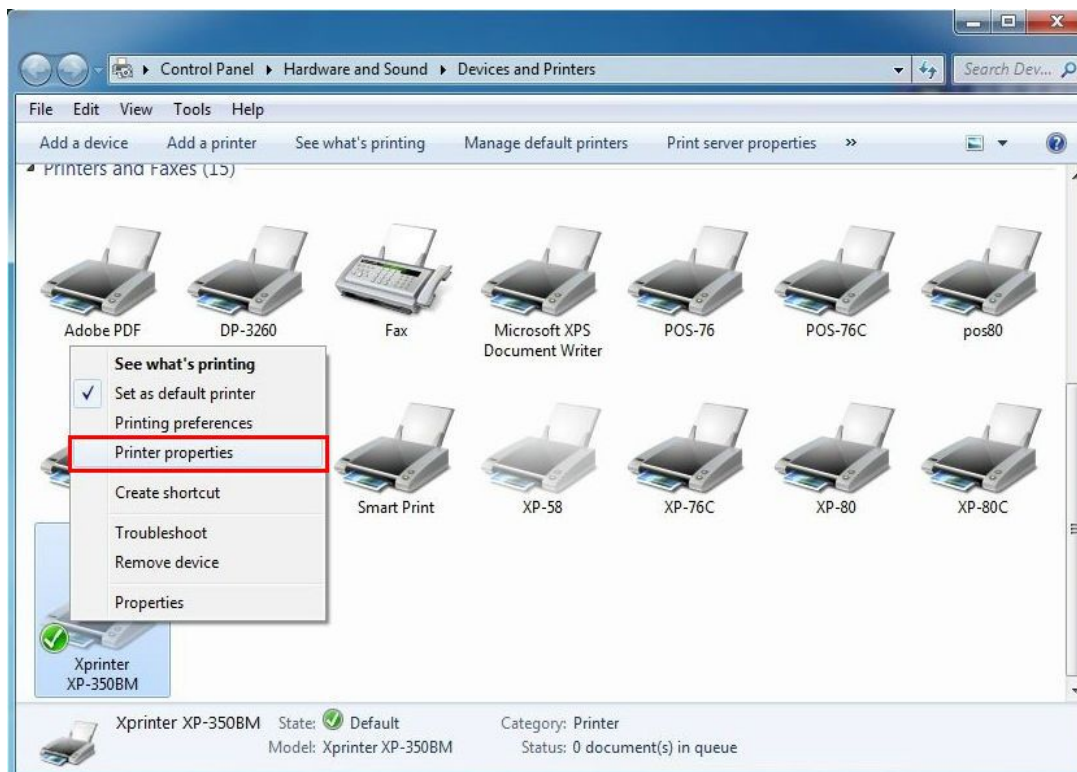


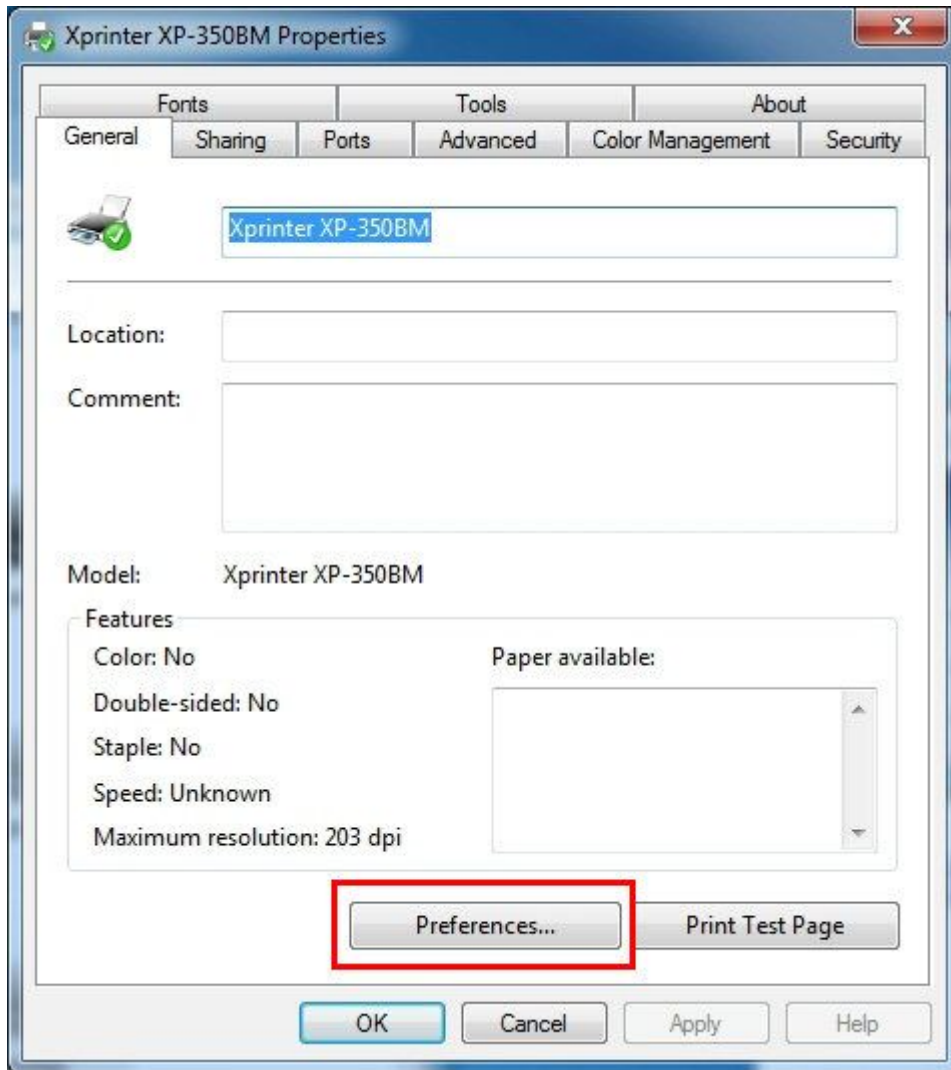
7. Complete the installation of driver “ Xprinter XP-350BM”, click “ Close”. As below picture:



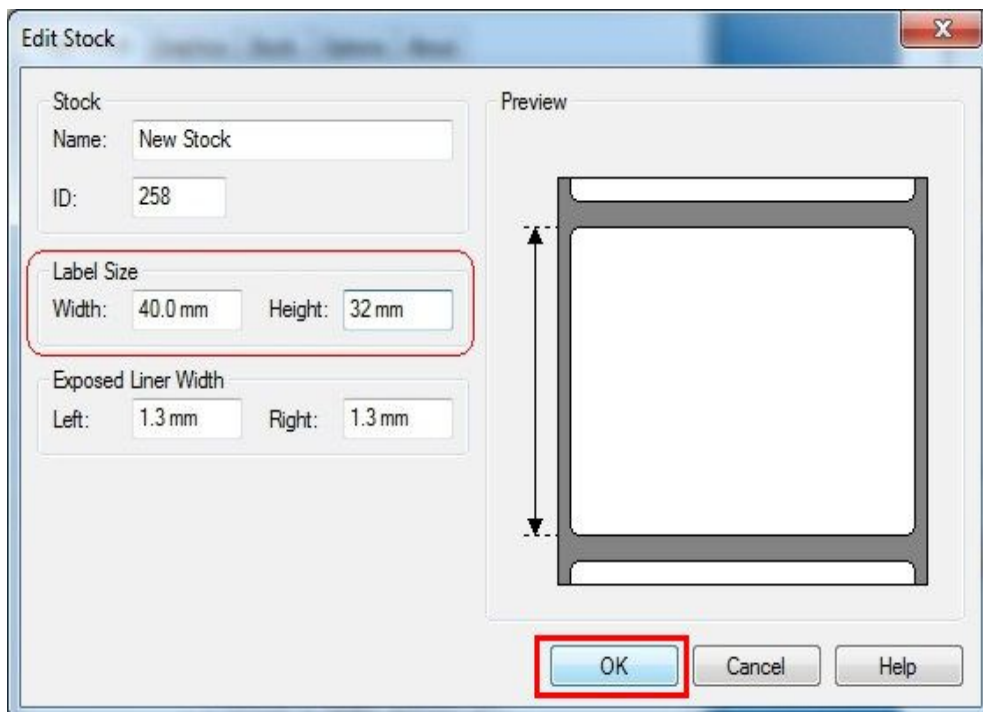
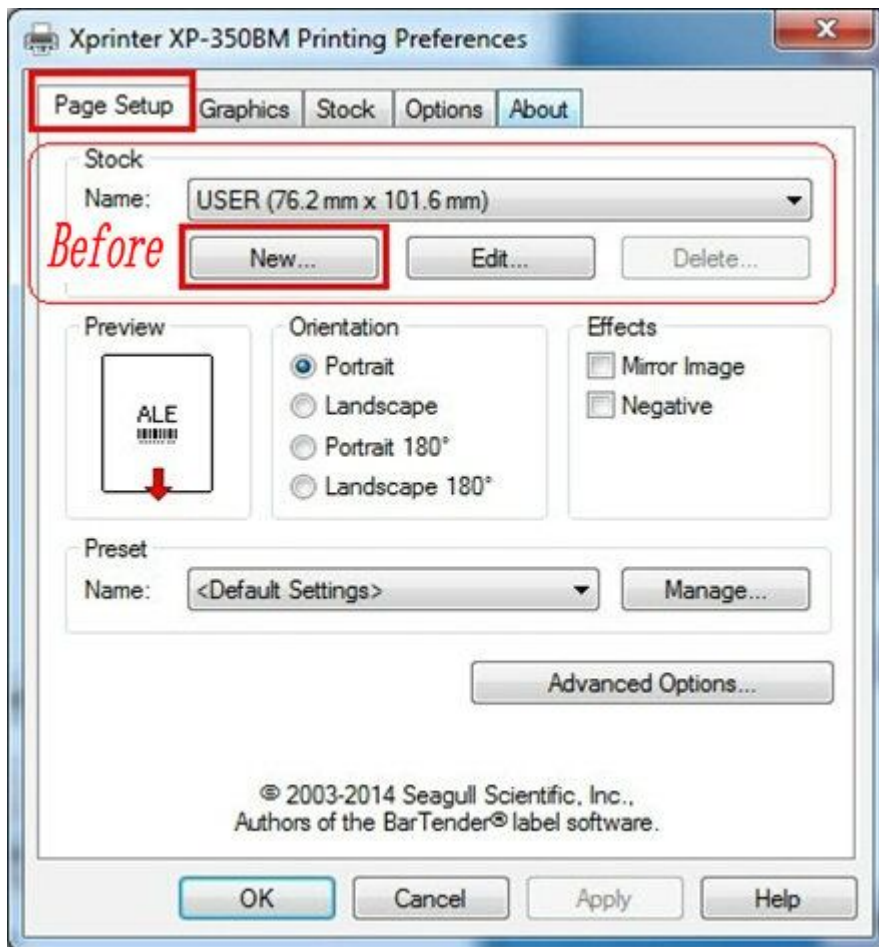
8. After installed drivers, click “Start” → “All Programs” → “Devices and printers”, find “Xprinter XP-350BM”. Choose this icon, right click → “printer properties”→”General”→“Preferences”, as below pictures:

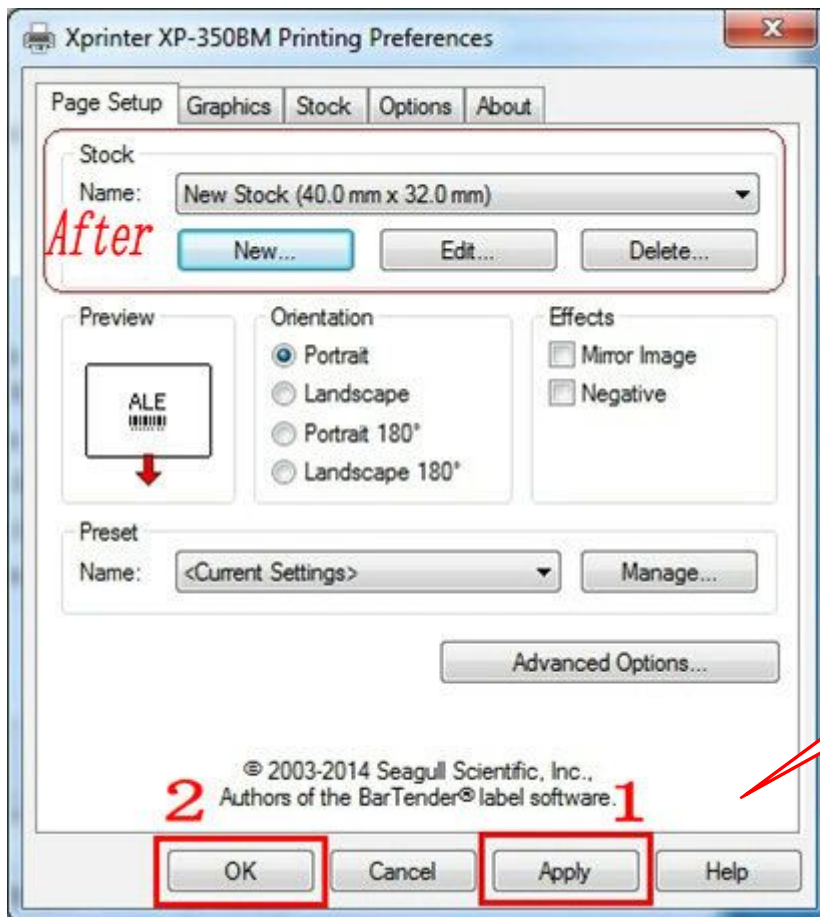






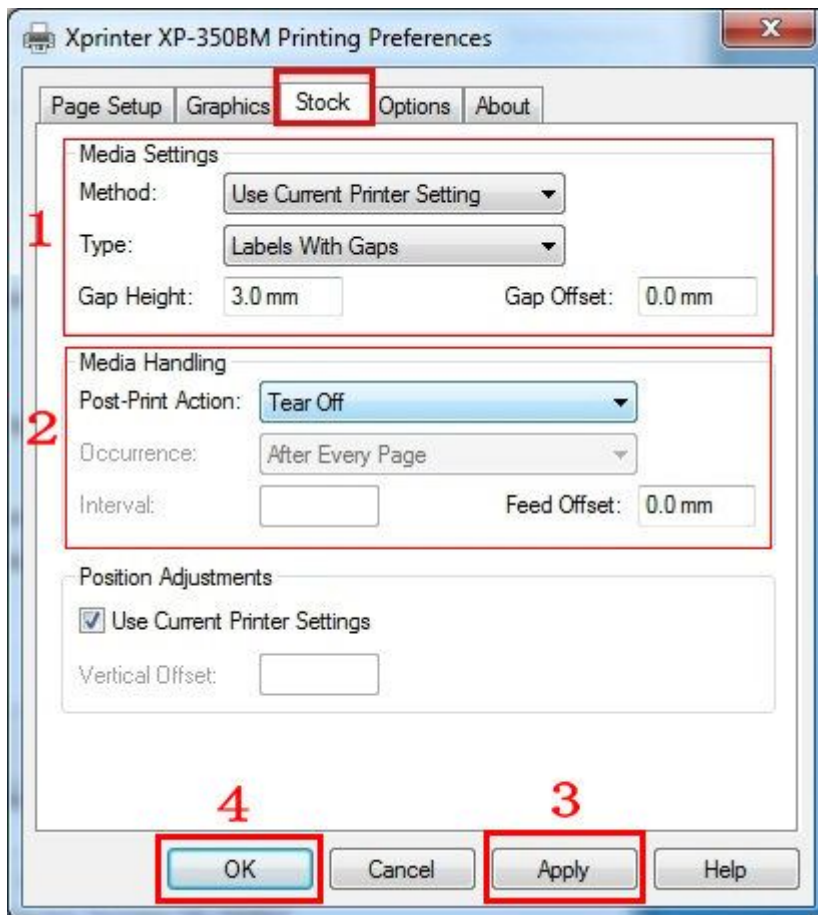
9. After clicking “Preferences”, click “Page setup” → “New” → then come to interface of (edit stock) to set the label size (Width, Height), new Stock will appear. Click “Apply” → “OK”. Pls see pictures as below.



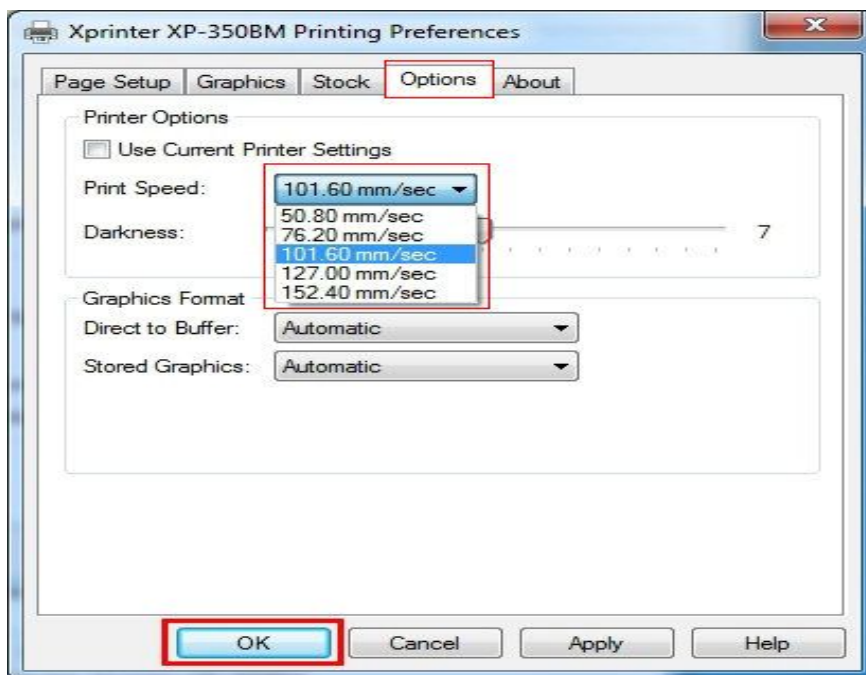


10. After setting the size of label, click “Stock” to adjust “Media Settings(Method,Type,Gap height)”/ “Media Handling”, then click “Apply” → “OK”.

PS: Gap height means the gap height between labels.



11. Click “Options” → Printer options to set Print Speed/Darkness. The default speed is 101.6mm/s, it has 5 grades. The default darkness is 7, it has 1-15 grades.



12. After setting above processes, in “General” option, click “Print Test Page”. as below

pictures:

