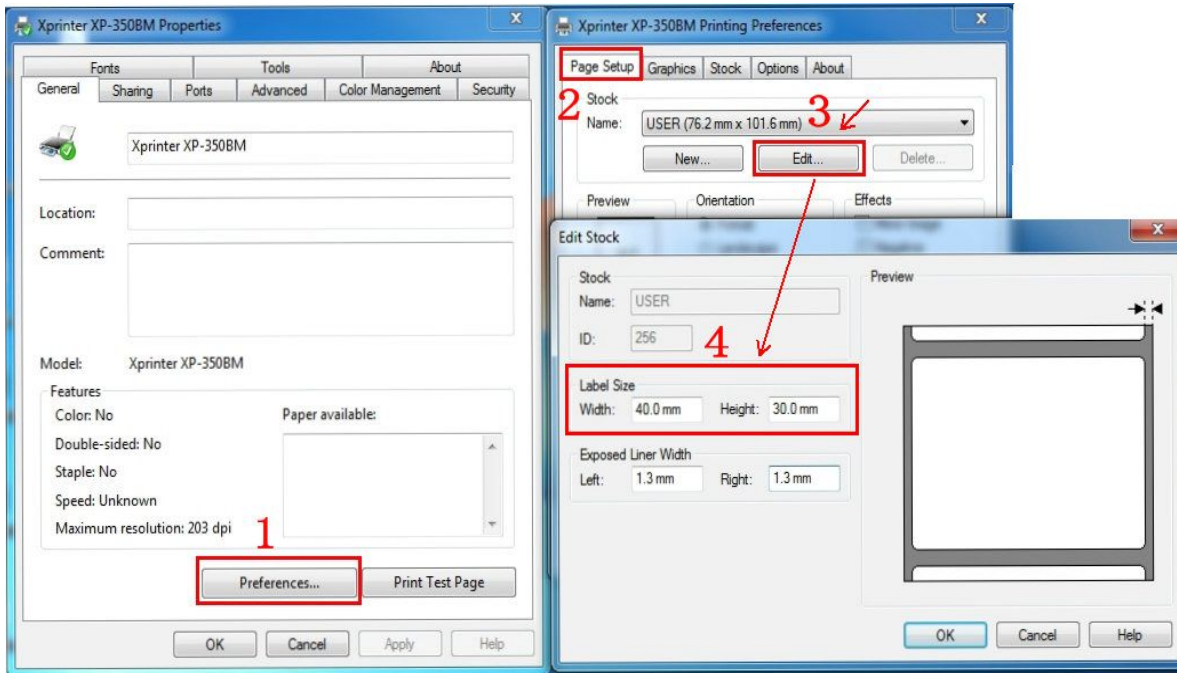


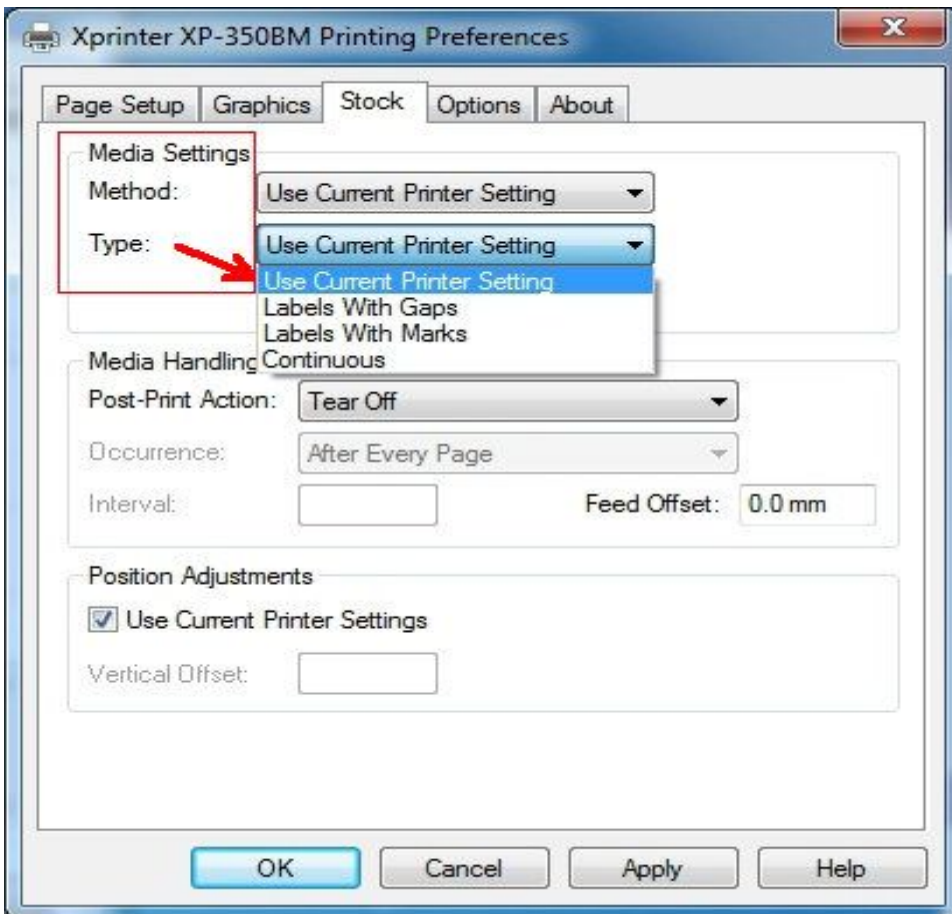
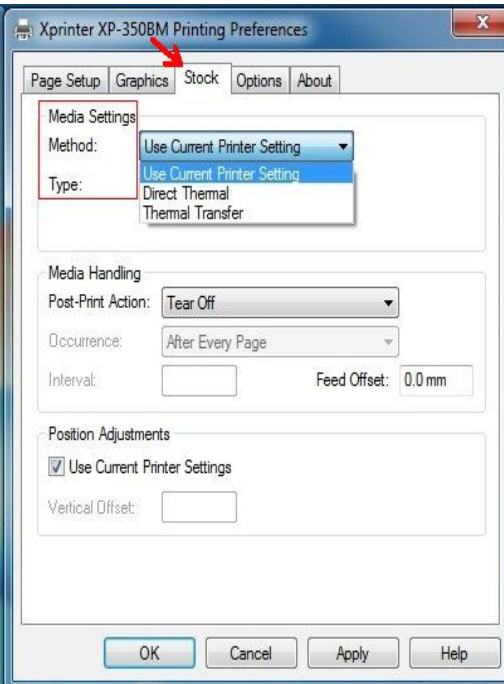
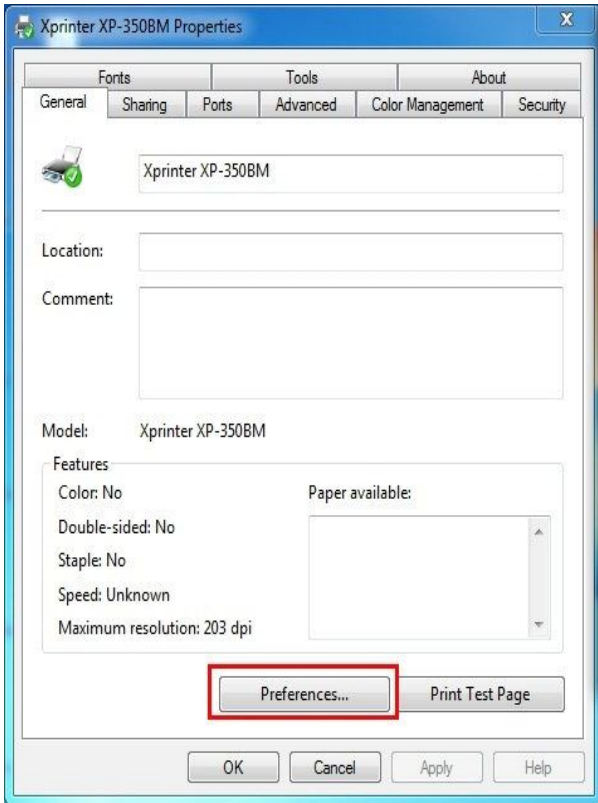
Setup instruction of Barcode driver

1. Please refer below steps for page setup: General → “Preferences” → “ Page Setup” → Click “Edit” to adjust the Label Size(With/ Height).



2. Please refer below steps for “stock” setup:

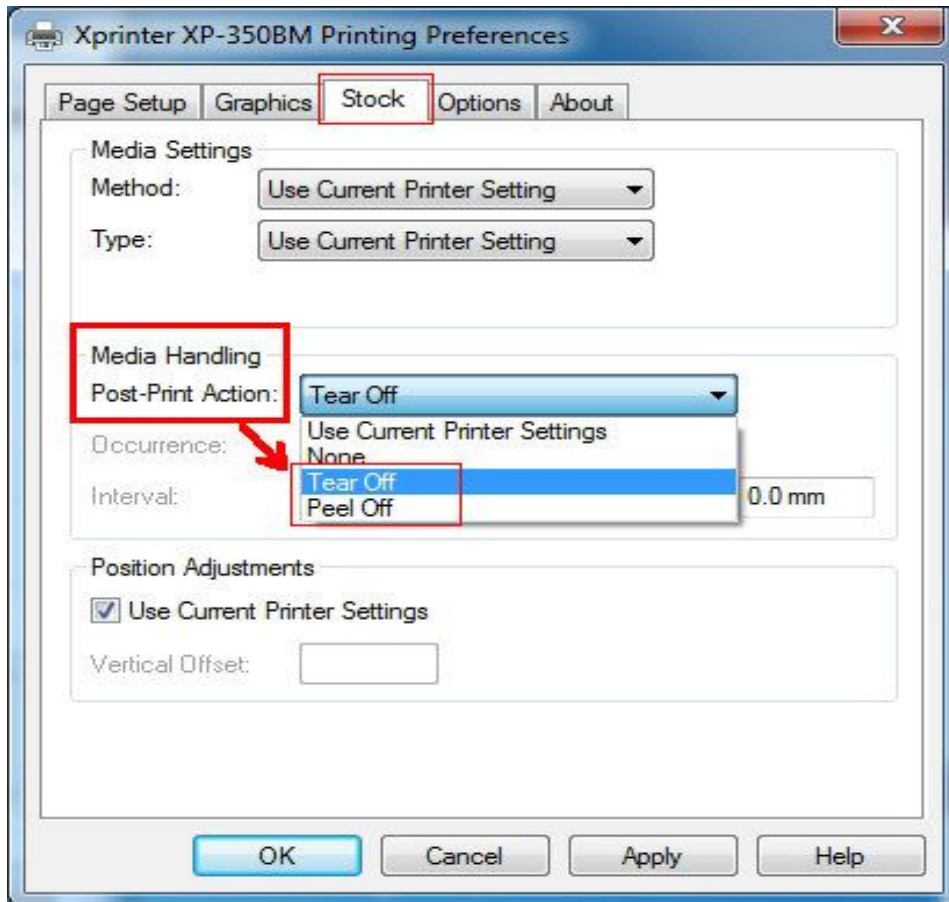
General → “Preferences” → “Stock” → Media Settings (choose “Use Current Printer Setting” for “Method” and “Type”.)



3. “Stock” → Media Handling(Post-Print Action: choose “Tear off”)

Tear Off: Can continuously print, tear off paper directly.

Peel Off: Print paper one by one, different loading paper.

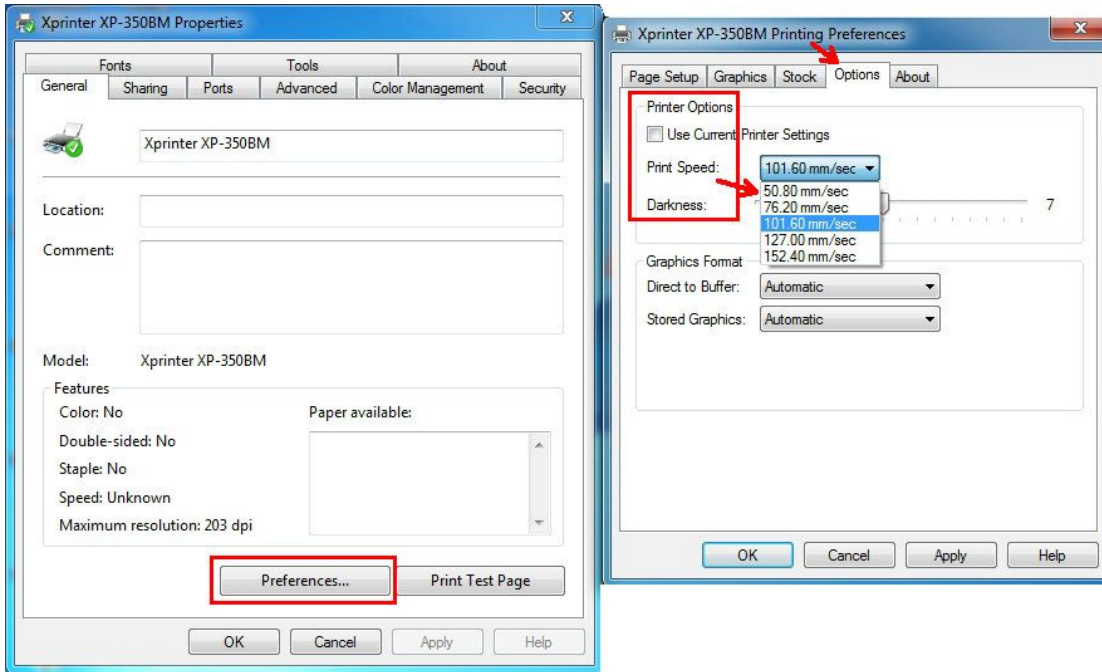


4. Click “Options” ->“Printer options” to set Print Speed/Darkness.

5 grades of print speed supported:

50.8mm/s;76.2mm/s;101.6m/s;127mm/s;152.4mm/s.The default print speed is 101.6mm/s.

The default darkness is 7, it has 1-15 grades.



5. “Stock” → Media Settings (Type: choose “Label With Gaps”, Gap Height: 3.0mm)
Gap height means the gap height between labels.

